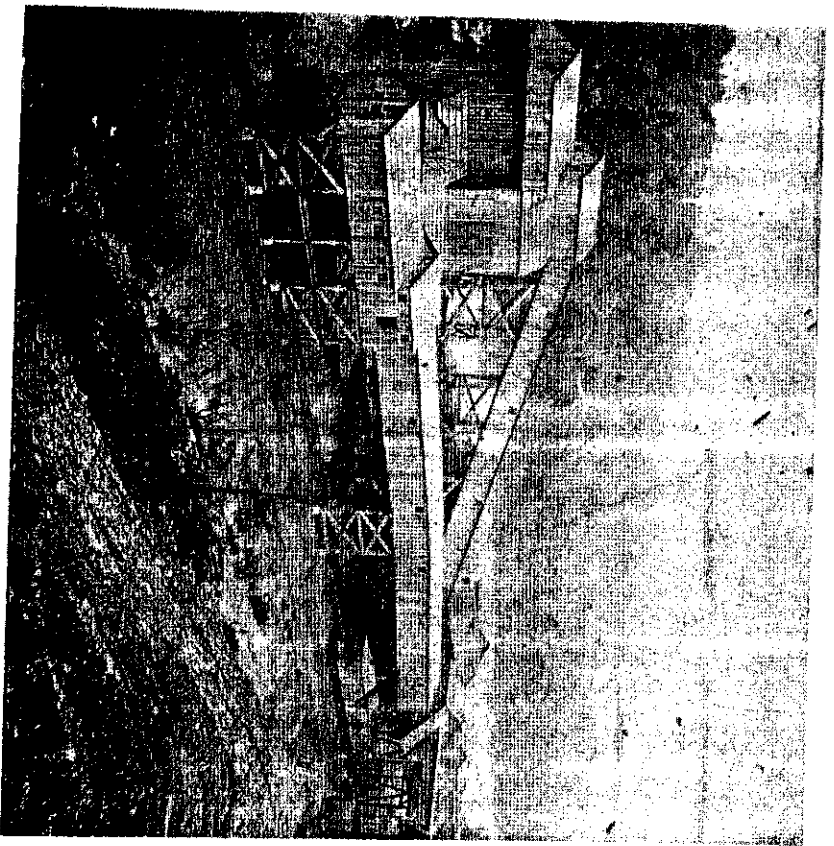


Victor Mine



The first two mines in Emeigh opened in 1904. With the coming of the railroad in 1905, Cherry Tree Coal Company began operations. Coal from the three mines was hand-dug and hauled out by mules. The first cleaning plant in Emeigh was built in the early 1920's. This was struck by lightning and burned in 1924, but another was erected.

Shown is Victor No. 17 mine at Emeigh where my grandfather James N. Price worked with his brother Pete, his favorite mine buddy. They did everything from laying track and running trolley wire to building brattices. There were accidents, and after a cave-in, Grandfather and Uncle Pete helped dig out one of their buddies.

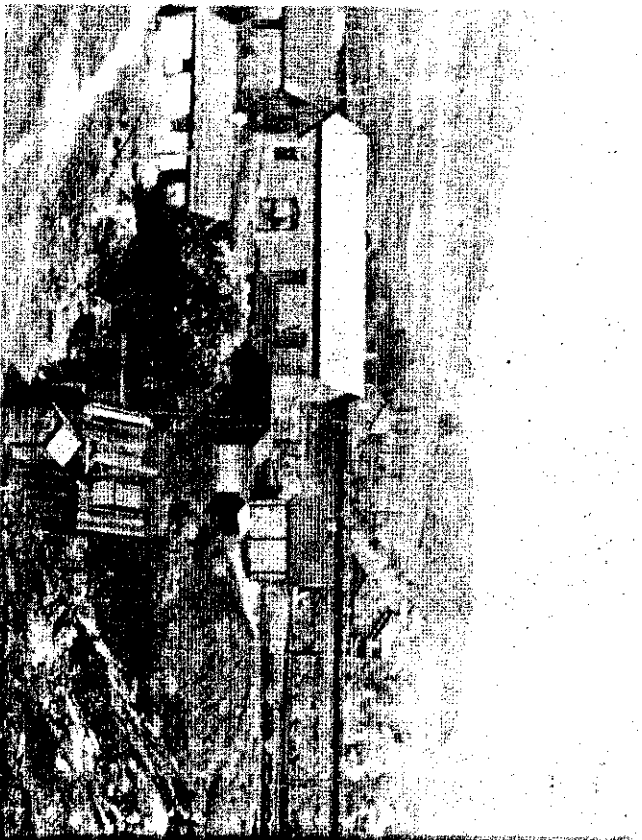
After the mine closed in 1954, my grandfather worked on a farm and at a saw mill, from which he retired at 66.

Pictured are the first cleaning plant, tipple and railroad track. At bottom right is the track that led to the top of the boney pile. Loaned by Jim Price.



Allport Mine

Allport miners,
about 1930, Row 2.
Bill Chervendak,
Bill Penn.



Allport Mine.